

Initial Inclusion

Place Shelly into the power socket without any device/load connected to the Shelly. Press the Power Button. The LED should flash red/blue. This means that Shelly is in AP mode. Press the Button again and the LED will turn off. This means that Shelly is turned off.

LED States

- Blue flashing quickly - AP Mode
 - Blue flashing slowly - STA Mode (no cloud)
 - Blue still - STA Mode (connected to cloud)
 - Red still - Relay On
 - Red & Blue flashing quickly - FW Update
- Some of the features of the Shelly Cloud mobile application are available at <https://my.shelly.cloud/> as well.

Control your home with your voice

All Shelly devices are compatible with Amazon's Alexa and Google's Assistant. Please see our step-by-step guides on: <https://shelly.cloud/compatibility/>

Shelly application

Shelly Cloud gives you opportunity to control and adjust all Shelly® Devices from anywhere in the world. You only need an internet connection and our mobile application, installed on your smartphone or tablet.

Registration

The first time you load the Shelly Cloud mobile app, you have to create an account which can manage all your Shelly® devices.

Forgotten Password

In case you forget or lose your password, just enter the e-mail address you have used in your registration. You will then receive instructions to change your password.

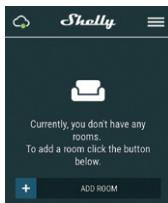
⚠ WARNING! Be careful when you type your e-mail address during the registration, as it will be used in case you forget your password.

First steps

After registering, create your first room (or rooms), where you are going to add and use your Shelly devices.

Shelly Cloud gives you opportunity to create scenes for automatic turning on or off of the Devices at predefined hours or based on other parameters like temperature, humidity, light etc. (with available sensor in Shelly Cloud).

Shelly Cloud allows easy control and monitoring using a mobile phone, tablet or PC.



Device Inclusion

To add a new Shelly device, install it to the power grid following the Installation Instructions included with the Device.

Step 1

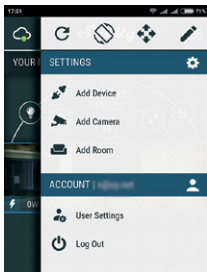
After the installation of Shelly following the Installation Instructions and the power is turned on, Shelly will create its own WiFi Access Point (AP).

⚠ WARNING! If the LED does not flash red/

blue, press and hold the Button for at least 10 seconds. The LED should then flash red/blue. If not, please repeat or contact our customer support at: support@shelly.cloud

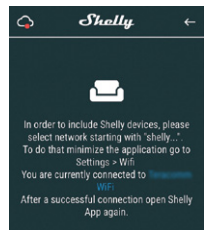
Step 2

Choose "Add Device". In order to add more Devices later, use the app menu at the top right corner of the main screen and click "Add Device". Type the name (SSID) and password for the WiFi network, to which you want to add the Device.



Step 3

If using iOS: you will see the following screen:



Press the home button of your iPhone/iPad/iPod. Open Settings > WiFi and connect to the WiFi network created by Shelly, e.g. shelly1-35FA58. If using Android your phone/tablet will automatically scan and include all new Shelly Devices in the WiFi network that you are connected to.

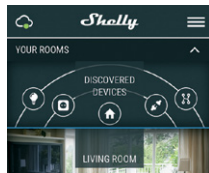


Upon successful Device Inclusion to the WiFi network you will see the following pop-up:



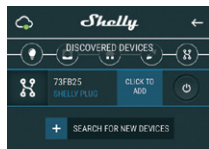
Step 4

Approximately 30 seconds after discovery of any new Devices on the local WiFi network, a list will be displayed by default in the "Discovered Devices" room.



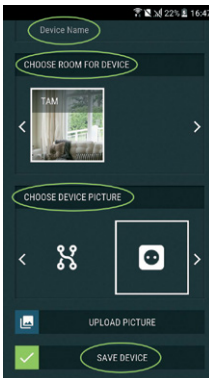
Step 5

Enter Discovered Devices and choose the Device you want to include in your account.



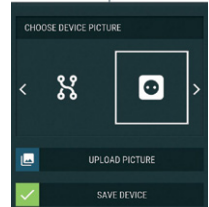
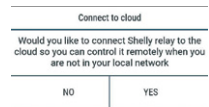
Step 6

Enter a name for the Device (in the Device Name field). Choose a Room, in which the Device has to be positioned. You can choose an icon or add a picture to make it easier to recognize. Press "Save Device".



Step 7

To enable connection to the Shelly Cloud service for remote control and monitoring of the Device, press "YES" on the following pop-up.



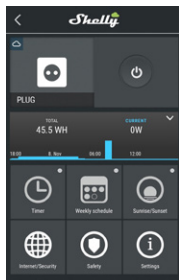
Shelly devices settings

After your Shelly device is included in the app, you can control it, change its settings and automate the way it works.



To switch the device on and off, use the **Power button**.

To enter the details menu of the device, click on its name. From there you may control the device, as well as edit its appearance and settings.



Timer - to manage the power supply automatically, you may use:

- Auto OFF - after turning on, the power supply will automatically shutdown after a predefined time (in seconds). A value of 0 will cancel the timer.

- Auto ON - after turning off, the power supply will be automatically turned on after a predefined time (in seconds). A value of 0 will cancel the timer.

Weekly Schedule - This function requires Internet connection. Shelly may turn on/off automatically at a predefined time.

Sunrise/Sunset - This function requires an Internet connection. Shelly receives actual information about the time of sunrise and sunset in your area. Shelly may turn on or off automatically at sunrise/sunset, or at a specified time before or after sunrise/sunset.

Internet/Security

- WiFi mode client - allows the device to connect to an available WiFi network. After typing the details in the respective fields, press Connect.

- WiFi mode access point - configure Shelly to create a Wi-Fi Access point. After typing the details in the respective fields, press Create Access Point.

- Cloud - enable or Disable connection to the Cloud service.

- Restrict login - Restrict the web interface of Shelly with a Username and Password. After typing the details in the respective fields, press Restrict Shelly.

Safety - Max power protection - configure Shelly to turn off when a defined power consumption is reached. The range is 1-2500W. After typing the desired power consumption, press Save.

Settings

Power ON default mode - This sets the default output state when Shelly is powered.

- ON - configure Shelly to turn ON, when it has power.

- OFF - configure Shelly to turn OFF, when it has power.

- Restore last mode - configure Shelly to return to last state it was in, when it has power.

Firmware update - update the firmware of Shelly, when a new version is released.

Time zone and geo-location - enable or Disable the automatic detection of Time Zone and Geo-location.

Factory reset - return Shelly to its factory default settings.

- Device Information - here you can see the:
- Device ID - unique ID of Shelly
- Device IP - the IP of Shelly in your Wi-Fi network

Edit device

- Device Name
- Device Room
- Device Picture

The Embedded Web Interface

Even without the mobile app Shelly can be set and controlled through a browser and connection of a mobile phone or tablet.

Abbreviations used:

- Shelly-ID - consists of 6 or more characters. It may include numbers and letters, for example 35FA58.

- SSID - the name of the WiFi network, created by the device, for example ShellyPlugS-35FA58.

- Access Point (AP) - in this mode in Shelly creates its own WiFi network.

- Client Mode (CM) - in this mode in Shelly connects to another WiFi network.

Installation/Initial inclusion

Step 1

Place Shelly into the socket and wait the WiFi LED to flash red/blue.

WARNING! If you don't see the WiFi please follow the step 1 from the device inclusion section of the guide.

Step 2

When the LED is flashing red/blue, Shelly has created a WiFi network, with name such as ShellyPlugS-35FA58. Connect to it.

Step 3

Type 192.168.33.1 into the address field of your browser to load the web interface of Shelly.

General - Home Page

This is the home page of the embedded web interface. Here you will see information about:

- Current electrical consumption
- Current state (on/off)
- Power Button
- Connection to Cloud
- Present time
- Settings



Timer - to manage the power supply automatically, you can use:

- Auto OFF - after turning on, the power supply will automatically shutdown after a predefined time (in seconds). A value of 0 will cancel the automatic shutdown.

- Auto ON - after turning off, the power supply will be automatically turned on after a predefined time (in seconds). A value of 0 will cancel the automatic power-on.

Weekly schedule - this function requires an Internet connection. To use Internet, a Shelly device has to be connected to a local WiFi network with working Internet connection. Shelly may turn on/off automatically at a predefined time.

Sunrise/Sunset - this function requires an Internet connection. To use Internet, a Shelly device has to be connected to a local WiFi network with a working Internet connection. Shelly receives actual information through the Internet about the time of sunrise and sunset in your area. Shelly may turn on or off automatically at sunrise/sunset, or at a specified time before or after sunrise/sunset.

Safety - With max power you can limit the maximum power the socket will supply. If the pre-set current draw is exceeded, Shelly will turn the socket off. Allowable power can be set between 1 to 2500W.

Internet/Security

- WiFi mode client - allows the device to connect to an available WiFi network. After typing the details in the respective fields, press Connect.

- WiFi Mode access point - Configure Shelly to create a Wi-Fi Access point. After typing the details in the respective fields, press Create Access Point.

- Cloud - enable or Disable connection to the Cloud service.

- Restrict login - restrict the web interface of Shelly with a Username and Password. After typing the details in the respective fields, press Restrict Shelly.

Advanced developer settings - here you can change the action execution via CoAP (CoIoT) or Via MQTT.

WARNING! To reset the device, press and hold the Button for at least 10 seconds. After the Button begins to flash in red/blue, release it.

Settings

Power ON default mode - This sets the default output state when Shelly is powered.

- ON: Configure Shelly to turn ON, when it has power.

- OFF: Configure Shelly to turn OFF, when it has power.

- Restore Last Mode: Configure Shelly to return to last state it was in, when it has power.

- Firmware Upgrade: Shows present firmware version. If a newer version is available, you can update your Shelly by clicking Upload to install it.

Time Zone and Geo-location - Enable or Disable the automatic detection of Time Zone and Geo-location.

Factory reset - return Shelly to its factory settings.

Device Reboot - reboots the device.

Additional Features - Shelly allows control via HTTP from any other device, home automation controller, mobile app or server.

For more information about the REST control protocol, please visit www.shelly.cloud or send a request to developers@shelly.cloud

